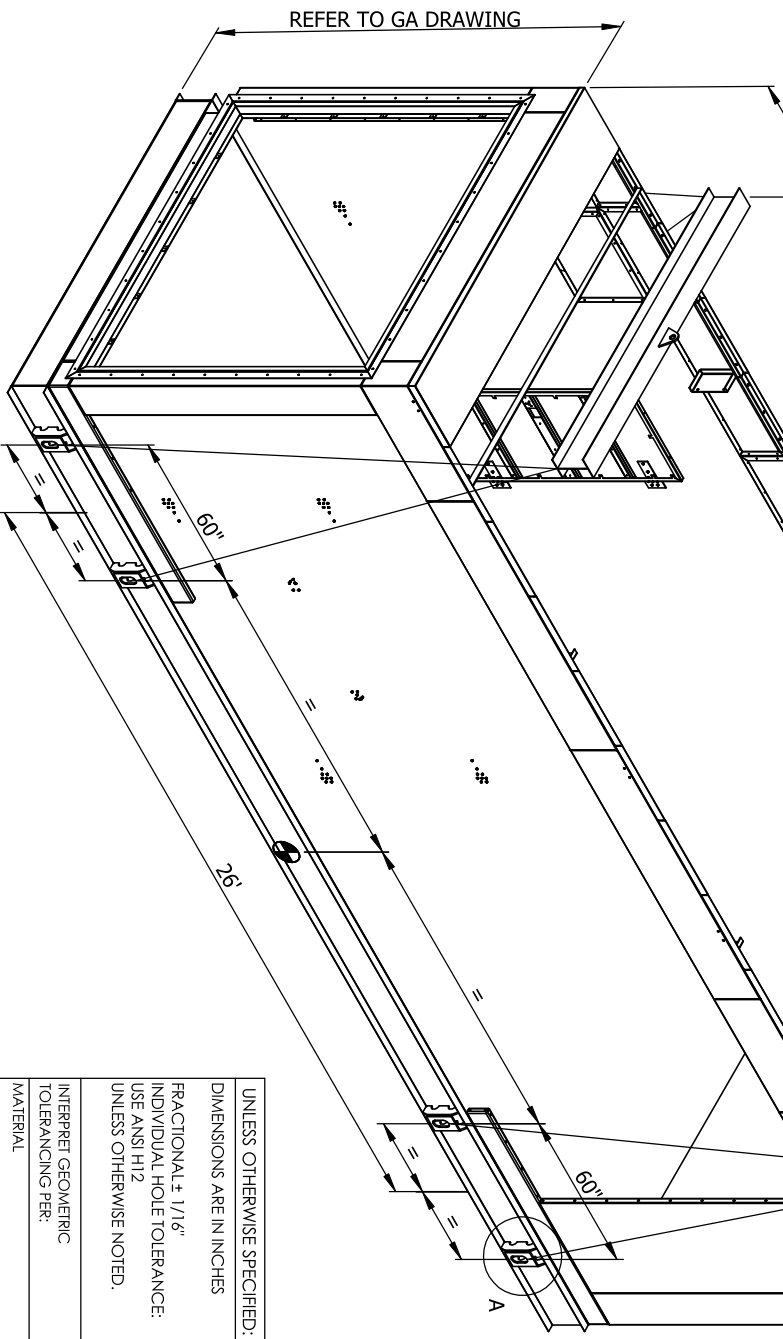


NOTES:
 -REFER TO GA DRAWING FOR HEIGHT.
 -ENCLOSURE WIDTH TYPICALLY 119" OR 144".
 -CHECK WITH PROJECT SPECIFIC GA DRAWING FOR CONFIRMATION
 -● CENTER OF GRAVITY
 -IN THE EVENT THAT LIFTING EYES DO NOT MEET THIS STANDRAD, PROJECT SPECIFIC DETAIL WILL BE PROVIDED.



UNLESS OTHERWISE SPECIFIED: DIMENSIONS ARE IN INCHES		NAME	DATE
FRACTIONAL ± 1/16"		DRAWN	DEAN 12/22/10
INDIVIDUAL HOLE TOLERANCE: USE ANSI H12 UNLESS OTHERWISE NOTED.		CHECKED	
INTERPRET GEOMETRIC TOLERANCING PER:		ENG APPR.	
MATERIAL		MFG APPR.	
FINISH		Q.A.	
DO NOT SCALE DRAWING		PROJECT NUMBER:	



DESIGN BY INITIATIVE, LLC
 TITLE:
 ENGINEERING DESIGN INSTRUCTIONS (EDI)
 FOR
 STANDARD PACKAGE LIFTING DETAIL

SIZE DWG. NO. REV
B EDI Standard Package Lifting REL
 SCALE: 1:1.100 WEIGHT: SHEET 1 OF 1

